

---

**FOR A LIFE THAT  
FEELS LIKE A RETREAT,  
IN A PLACE NOT FAR  
AWAY FROM THE CITY.**

---



**SPACIOUS 1 & 2 BHK FULLY- FURNISHED HOMES AT  
UPPER KHOPOLI, NEAR ADLABS IMAGICA.**

**MITTAL RETREAT**  
U p p e r K h o p o l i



**INTRODUCING PHASE 1**



## A LIFE OF QUALITY, COMFORT, WELLNESS AND VALUES.

A Mittal Retreat home is about the perfect balance between style, substance and the environment. A luxurious and comfortable home made complete by nesting it within the hills of Khopoli. Your home is spacious, well-ventilated, well-lit and fully-furnished. The complex has mesmerizing landscapes and a lifestyle befitting a retreat. Welcome Home.

## NOT JUST A HOME FOR YOURSELF. BUT A LEGACY FOR YOUR CHILDREN.

**1** Mittal Retreat is a sustainable living development from Living Habitats, the sustainable construction division of Mittal Builders. The Mittal Group is synonymous with premium quality and a legacy spanning over 50 million sq. ft. of construction in the residential and commercial spaces.



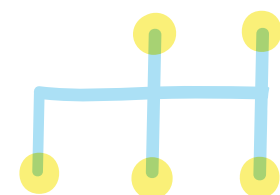
**2** Spread over 4 acres of lush green pristine land offering the first-of-its-kind sustainable residential development built for those seeking beauty and comfort in harmony with nature.



**3** Mittal Retreat has been eco-engineered to ensure efficient utilisation of the depleting natural resources and along the way, achieve savings of around 30 ~ 40% on electricity, water and maintenance bills.



**4** Mittal Retreat is just 10 minutes away from the famous Adlabs Imagica Theme Park and well connected to bus and railway stations besides Panvel and the upcoming Navi Mumbai International Airport.



## NOT JUST HOMES. BUT REAL VALUE HOMES.

- Spacious 1 & 2 BHK configuration
- Sit-out Deck for every apartment
- Designer Furniture & Fittings including AC, and LCD TV
- Modular Kitchen with Induction Stove, Refrigerator & Microwave

### APARTMENT FEATURES

- French Sliding Windows in Living Room with Mosquito Mesh
- Designer Vitrified Tiles
- 24X7 Water Supply
- Centralised RO & Hot Water Facility
- Attached & Common Washrooms
- 100% Power Back-Up
- Wi-Fi Connectivity
- Intercom facility



1 BHK CARPET AREA  
485 SQ. FT.



2 BHK CARPET AREA  
630 SQ. FT.

### SUSTAINABILITY FEATURES

- Solar Energy for apartments and common areas
- LED Lights in every room
- Water Recycling, Harvesting & Recharge
- Wet-Waste Composting
- Responsible disposal of Dry-Waste
- Low VoC Paints
- Electrical car / bike charging station



Fresh air and wind through the day, surrounded by pristine hills and meandering meadows.



## THE GRAND CLUBHOUSE. WHERE LIFE, LIFESTYLE AND NATURE CONVERGE.

Your 1 & 2 BKH fully-furnished home comes with an exciting 11,000 sq. ft. Club House and a sprawling lush-green landscaped garden hosting a multitude of amenities for you to experience and enjoy.

### LIFESTYLE AMENITIES FOR A RETREAT-LIKE EXPERIENCE.

- Swimming Pool
- Banquet Hall
- Gymnasium
- Wellness Spa
- Kids Play Area
- Card Room
- Restaurant
- Coffee Shop
- Guest Rooms
- Business Centre



# LIVE. WORK. PLAY. ALL WITHIN MITTAL RETREAT.

## EXTERNAL AMENITIES

- Outdoor Play Area
- Nana-Nani Park
- Rink Football
- Roller Skating Ring
- Basketball
- Jogging Track
- Cricket Pitch
- Wi-Fi in Common Areas
- Security with CCTV



- Supermarket
- Shopping Plaza
- ATM
- Pharmacy
- Electronic Arcade
- Co-Working Spaces

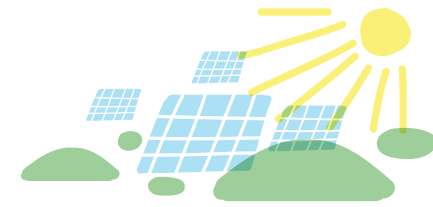
10 MINUTES AWAY FROM  
ADLABS IMAGICA AND  
SHRI BALLALESHWAR  
PALI TEMPLE



Images shown above are for representation purposes only

## BUILDING NEWER FOUNDATIONS AND PLANTING DEEPER ROOTS.

At Mittal Retreat, we stay true to our philosophy of blending with nature instead of building all over it. We ensure our homes are designed for optimum daylight and climatic comfort and are built using sustainable materials and environment-friendly construction processes.



### AN EFFICIENT SOLAR COMMUNITY

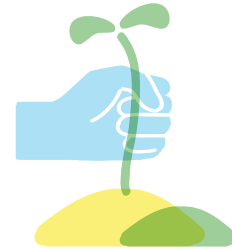
Hybrid wind & solar energy sources will be used to generate power for individual apartments and common areas. This not only reduces your dependence on the government electricity grid, but considerably reduces your utility and maintenance bills as well.

### TOTAL WASTE MANAGEMENT

Waste management features includes composting, recycling & reuse of waste materials. With these measures, we strive to make Mittal Retreat, a Zero Waste residential development.



### IN PURSUIT OF CARBON NEUTRALITY



The pursuit of carbon neutrality comes through choosing appropriate earth-friendly construction materials, systems and processes. All carbon emissions at Mittal Retreat will be offset through plantation of mini-forests in the Western Ghats. Mittal Retreat will be a Carbon Neutral project, with its significantly reduced energy consumption and increased use of low carbon energy sources - an extremely rare feat and one of the very few in the world.

### SAVING PRECIOUS WATER

Grey & black water will be recycled through a Phytoid Process - a natural waste-water treatment system which uses no chemicals, no electricity and no machines. But that's not it, we will also harvest, treat and conserve water for use by all residents of Mittal Retreat. Therefore, in addition to saving one of the most precious resources of this planet, you will also save on water and maintenance bills.



## LOCATION MAP



AN INITIATIVE BY **LIVING HABITATS** THE SUSTAINABLE DIVISION OF MITTAL BUILDERS

For enquiries, call 88839 51234 or email at [sales@living-habitats.com](mailto:sales@living-habitats.com)

### HEAD OFFICE

Living Habitats Pvt. Ltd,  
171, Mittal Towers, A Wing, 17th Floor,  
Nariman Point, Mumbai - 400 021  
T : +91 (22) 2281 3731  
[www.living-habitats.com](http://www.living-habitats.com)



MahaRERA No. **P52000015424I** and available on the website  
<https://maharera.mahaonline.gov.in>

### SITE OFFICE

Mittal Retreat,  
SH 92, Opp. Nature Trails Resort,  
Durshet, Upper Khopoli,  
Maharashtra 410 203

This brochure has been printed on 100% recycled paper